

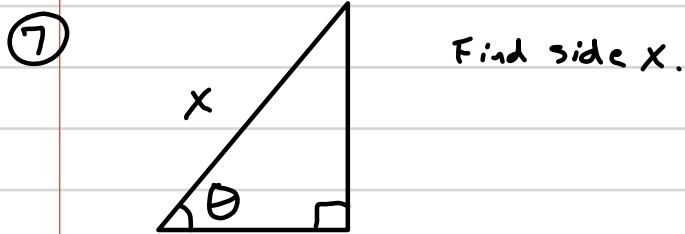
Name:
Period:
Date:

Practice Trigonometry Basics Test

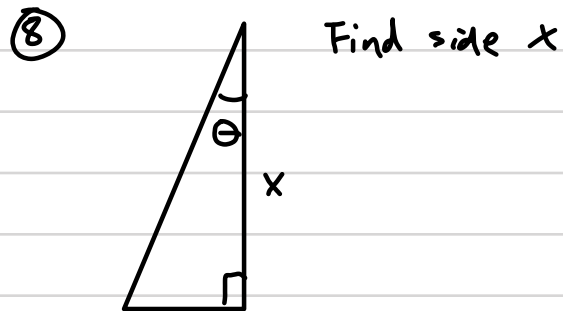
Write the definitions of the 3 basic trig functions and the definitions of the reciprocal trig functions.

① $\sin \theta =$ ② $\cos \theta =$ ③ $\tan \theta =$ ④ $\csc \theta =$

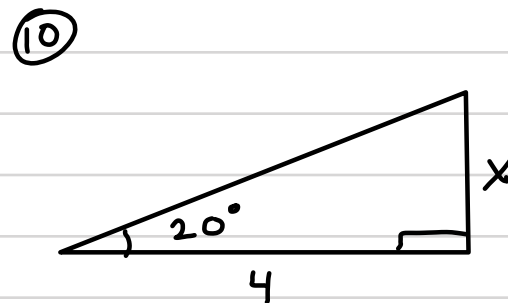
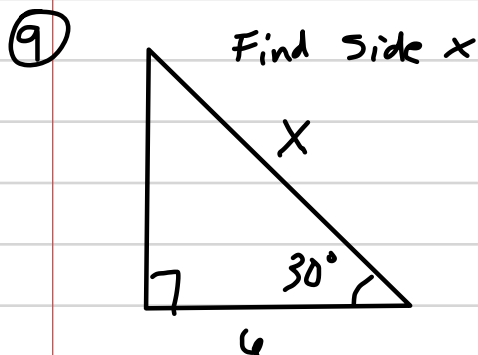
⑤ $\sec \theta =$ ⑥ $\cot \theta =$



$$\sin \theta = \frac{4}{5} \quad \cos \theta = \frac{3}{5} \quad \tan \theta = \frac{4}{3}$$



$$\sin \theta = \frac{3\sqrt{73}}{73} \quad \cos \theta = \frac{8\sqrt{73}}{73} \quad \tan \theta = \frac{3}{8}$$



Use a calculator to find each. Round to 3 decimal places.

⑪ $\sin 25^\circ =$ ⑫ $\cos 19^\circ =$ ⑬ $\tan 10^\circ =$

⑭ $\cot 120^\circ =$ ⑮ $\sec 225^\circ =$ ⑯ $\csc 10^\circ =$

Convert each angle

⑰ 300°

⑱ 210°

⑲ 90°

⑳ 35°

㉑ $\frac{\pi}{6}$ radians

㉒ $\frac{5\pi}{9}$ radians

㉓ $\frac{8\pi}{3}$ radians

㉔ 3.9 radians