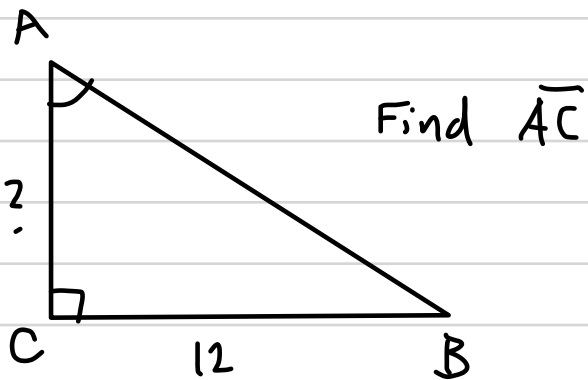


Missing Sides and Calculator Work

①



We need to use tangent.

$$\tan A = \frac{12}{?} = \frac{4}{3}$$

$$\frac{12}{?} = \frac{4}{3}$$
$$3(12) = 4(?)$$
$$\frac{36}{4} = \frac{4(?)}{4}$$

$$\sin A = \frac{4}{5} \quad \cos A = \frac{3}{5} \quad \tan A = \frac{4}{3}$$

$$\frac{36}{4} = ?$$
$$\boxed{AC = 9}$$

② Use a calculator to find $\sin 15^\circ$ and $\csc 15^\circ$ to 3 decimal places

$$\sin 15^\circ \approx 0.259$$

$$\csc 15^\circ \approx 3.864$$