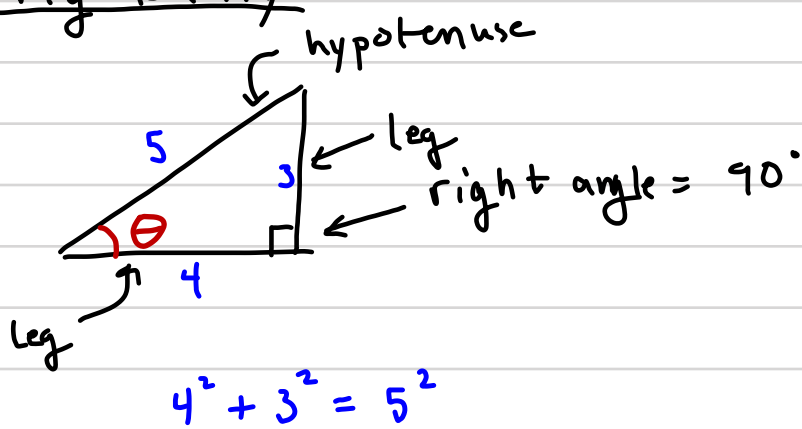


# Trigonometry

①



$$\sin \theta = \frac{3}{5}$$

$$\cos \theta = \frac{4}{5}$$

$$\tan \theta = \frac{3}{4}$$

Trig functions:

sin (sine)      cos (cosine)      tan (tangent)

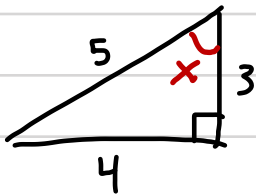
soh cah toa

$$\sin \theta = \frac{\text{opp}}{\text{hyp}}$$

$$\tan \theta = \frac{\text{opp}}{\text{adj}}$$

$$\cos \theta = \frac{\text{adj}}{\text{hyp}}$$

②



$$\sin(x) = \frac{4}{5}$$

$$\cos(x) = \frac{3}{5}$$

$$\tan(x) = \frac{4}{3}$$