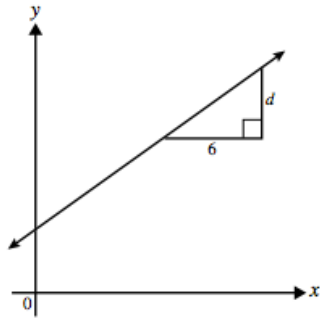


3/4/13 Warm Up

5. The slope of the line shown below is $\frac{2}{3}$.



What is the value of d ?

- A 3
- B 4
- C 6
- D 9

M02078

6. Solve for n .

$$2n + 3 < 17$$

- A $n < 2$
- B $n < 3$
- C $n < 5$
- D $n < 7$

M02040

3. Simplify the expression shown below.

$$(5x^2z^2)(8xz^3)$$

- A $40x^2z^6$
- B $40x^3z^5$
- C $40x^3z^6$
- D $40x^5z^5$

M02099